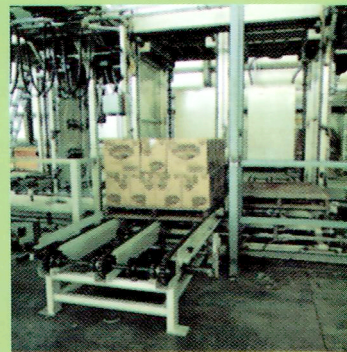
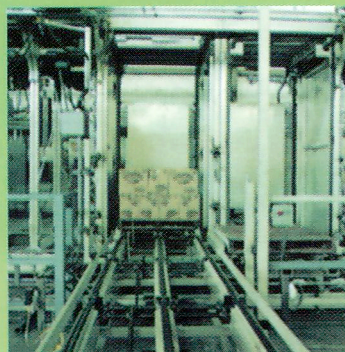
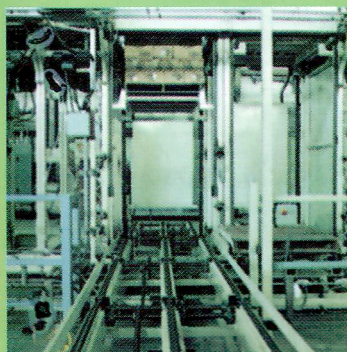
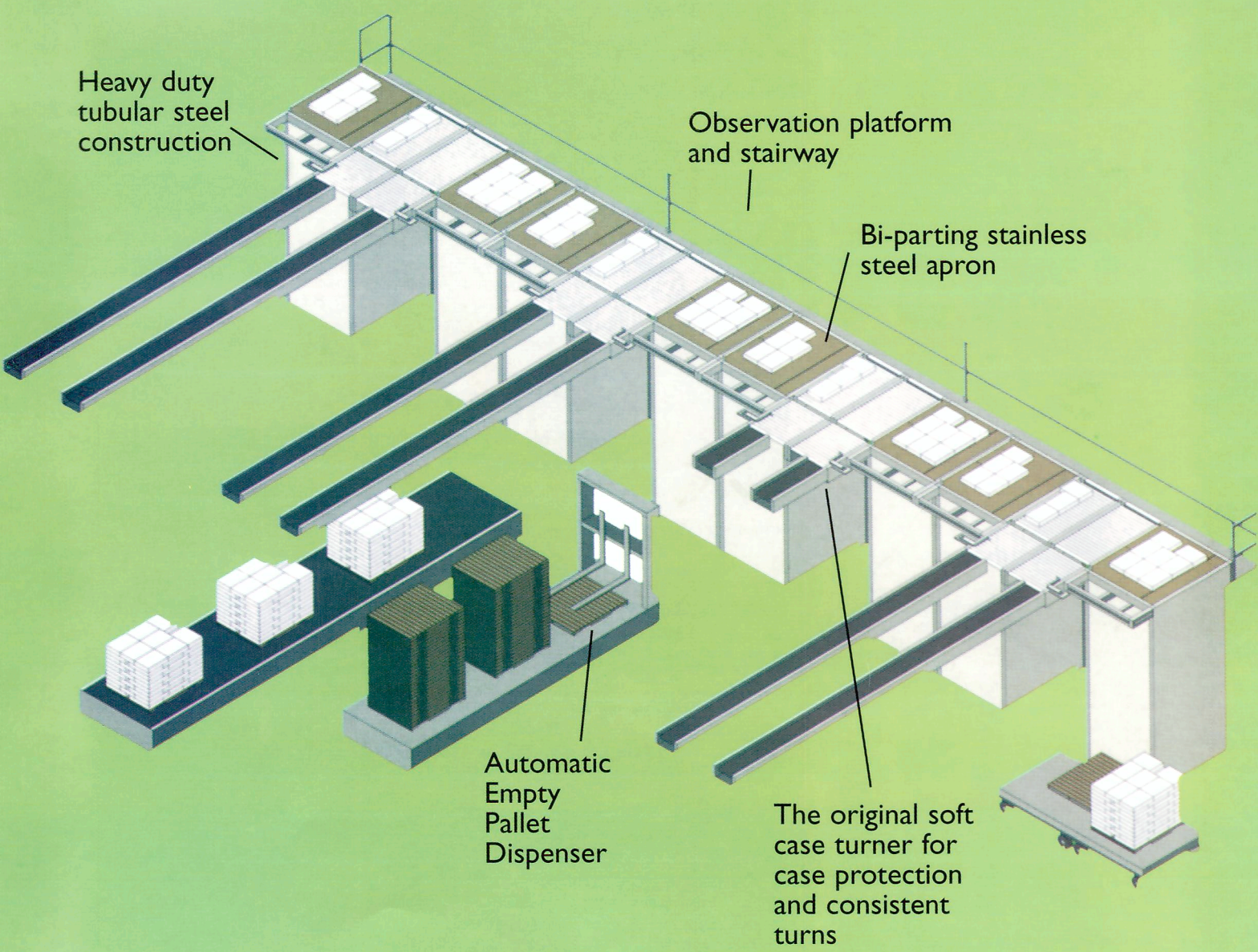


PRODUCTION  
AUTOMATION  
**SERIES 2200**  
AUTOMATIC  
PALLETIZER



**The PAI 2200 is a dual product machine that lends itself to high density multi-line systems.** Units installed directly adjacent to each other can be serviced by a dual station transfer car that receives full pallets and delivers empty pallets. These systems are extremely compact and can be configured in many ways to suit various plant layouts. A second pallet size or construction is easily integrated into the system.



## Here are some of the outstanding features of the Series 2200:

Pallet Sizes	48 x 40, 36 x 36 (Any practical size)
Case Sizes	Most any case size
Speed	5 to 25 cpm (Depending on case size)
Loading and Unloading	Rear, Side, & Dual (Rear & Side)
Full pallet staging	As many as needed
Electrical	Setup for your location

---

Options	Pallet Sheet Dispenser
	Tie Sheet Dispenser

---

- Automatic Empty Pallet Dispenser
- QD hub sprockets and necked down shafts at bearing ends to prevent lateral movement (no set screws to work loose)
- Observation platform and stairway
- Threaded rigid conduit
- Totally enclosed fan cooled motors
- Plug-in photocells, limit switches and pneumatic valves
- Heavy duty tubular steel construction
- The original soft case turner for case protection and consistent turns
- Bi-parting stainless steel apron
- Four point hoist system
- Only PAI offers UHMW chain guides for pallet conveyor, apron, compressions (front/rear and each side) and hoist to reduce maintenance and lubrication
- Side compression to automatically center layers on hoist and produce good uniform pallet loads NO ADJUSTMENT NEEDED FOR PRODUCT OR PATTERN CHANGE)
- Allen-Bradley 504 programmable controller
- Automatic operated lockable air dump valve
- Machinery enamel paint (specify color)
- Soft start on loaded pallet conveyors where necessary
- Main control panel with flange mounted circuit breaker
- Conduit, wiring, controls and panels are UL approved
- FIVE DAYS INSTALLATION TIME (does not include expenses)
- Internet link to up load/down load programs, trouble shoot and order parts
- Parts available from local supply houses
- Prewired, tested and guaranteed for 6000 operating hours

---

Production Automation is a leading U.S. developer and manufacturer of automated material handling systems, especially high speed, advanced palletizers, depalletizers and line dividers. Your material handling problems is our challenge. We invite your questions on specific product adaptations for your business.

---

### **PRODUCTION AUTOMATION, INCORPORATED**

Palletizer, Depalletizer (Stacker, Destacker), Line Dividers  
Automated Material Handling Systems

2075 Exchange Street, Montgomery, Alabama 36116  
Telephone 334.281.4970 Fax 334.281.9444  
on the web at <http://www.palletizers.com>  
email [pai@palletizers.com](mailto:pai@palletizers.com)