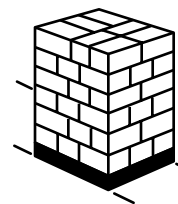
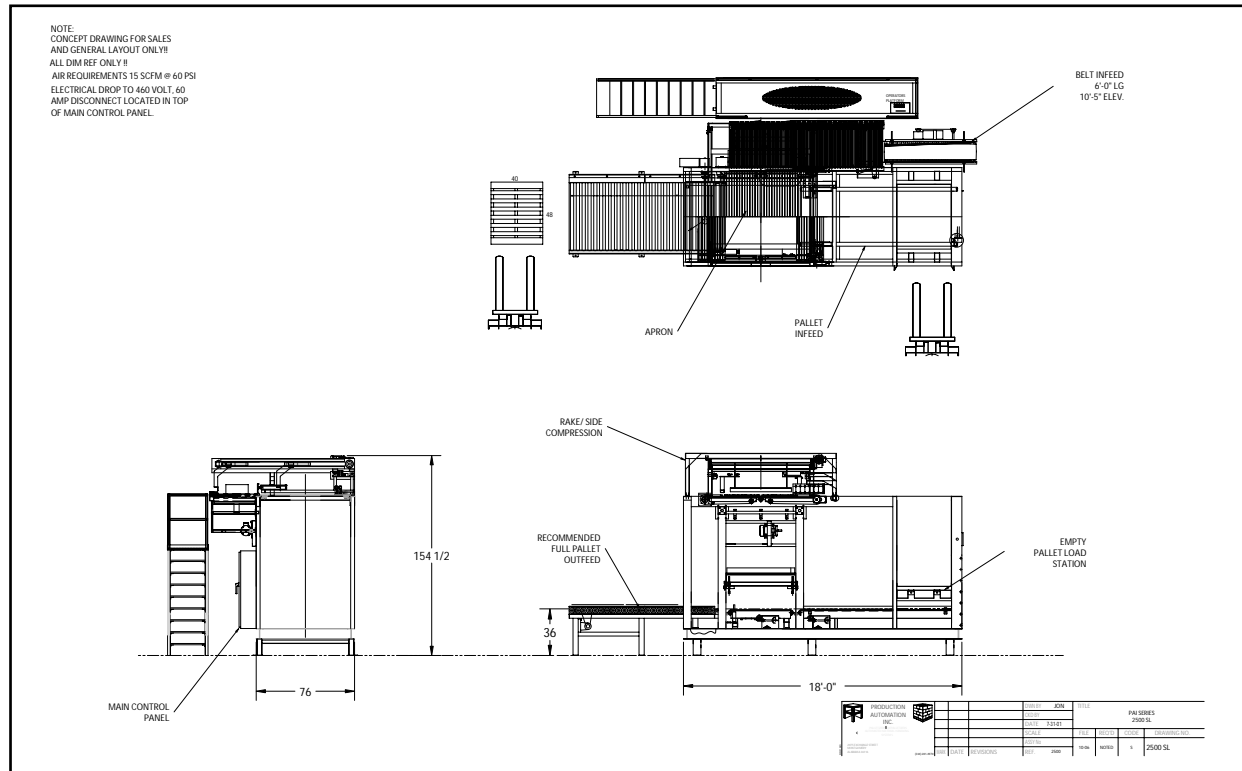


## SERIES 2500 RIGHT ANGLE PALLETIZER



**PRODUCTION  
AUTOMATION  
INC.**

**PALLETIZERS**

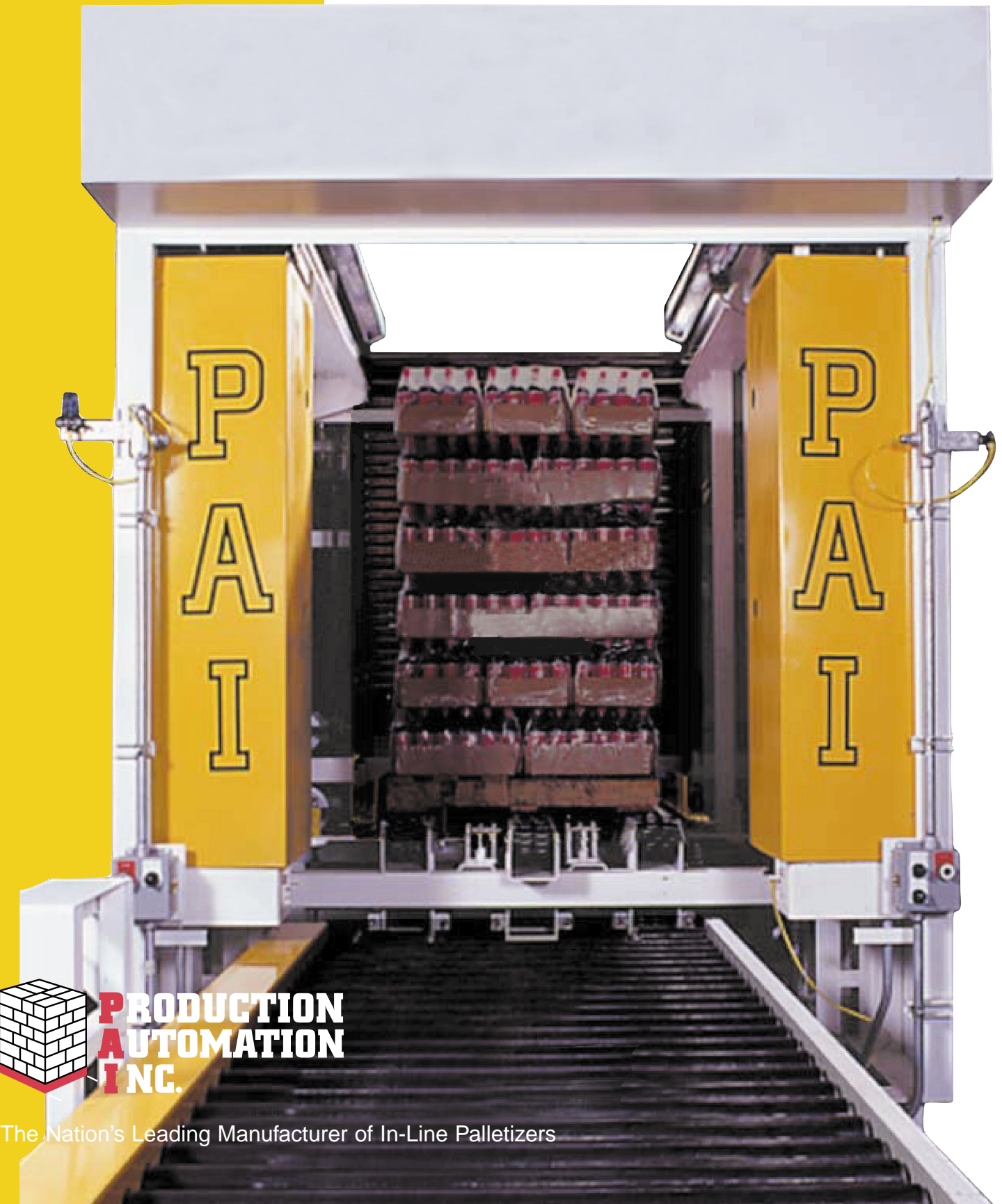
**AUTOMATED MATERIAL HANDLING SYSTEMS**

2075 Exchange Street • Montgomery Alabama 36116

Telephone (334) 281-4970 • Fax (334) 281-9444

Website: <http://www.palletizers.com>

## SERIES 2500 RIGHT ANGLE PALLETIZER



**PRODUCTION  
AUTOMATION  
INC.**

The Nation's Leading Manufacturer of In-Line Palletizers

# SERIES 2500 RIGHT ANGLE PALLETIZER

ECONOMICAL • MODERATE SPEED • CONTINUOUS MOTION

Production Automation, Inc., the industry's leading manufacturer of palletizers, introduces an economical, moderate speed, continuous motion, palletizer —

the **SERIES 2500!**

FEATURING:

- ▶ **Electric Drive System**
- ▶ **Heavy Duty Tubular Construction**
- ▶ **Soft Case Turning System**
- ▶ **Pattern Forming Area**
- ▶ **Low Pressure Layer Placement**
- ▶ **Scissor Lift Type Pallet Dispenser**
- ▶ **Easy-To-Use Touch Screen Display**

The **SERIES 2500** Palletizer can handle a wide range of case sizes including unsupported shrink-wrap cases at a speed range of 25 cases per minute.



For More Information  
Call (334) 281-4970.

▶ **LAYER PLACEMENT:**

The side compression holds the product as the biparting plate opens, placing the layer on the pallet or previous layer.



▶ **OPERATOR CONTROL STATION:**

Although no operator is required for PAI palletizers, convenient, uncomplicated controls are provided for the jogging of component or clearing of the machine. Enhanced versions of touchscreen controls are available upon request.

▶ **CASE CONVEYOR:** Layer accumulating conveyors are designed (i.e. — stainless steel or low friction surfaces) for the characteristics of the product being handled. There are NO dangerous overhead rakes on these machines. Layers are conveyed into place without force of sweep-bars.



▶ **FULL PALLET OUTFEED:** PAI's tried and proven drag-chain design allows for multiple load accumulation with a single drive. This design simplifies dual-load pickup by dual-fork lift trucks. (Roller bed and CDLR chain available upon request.)

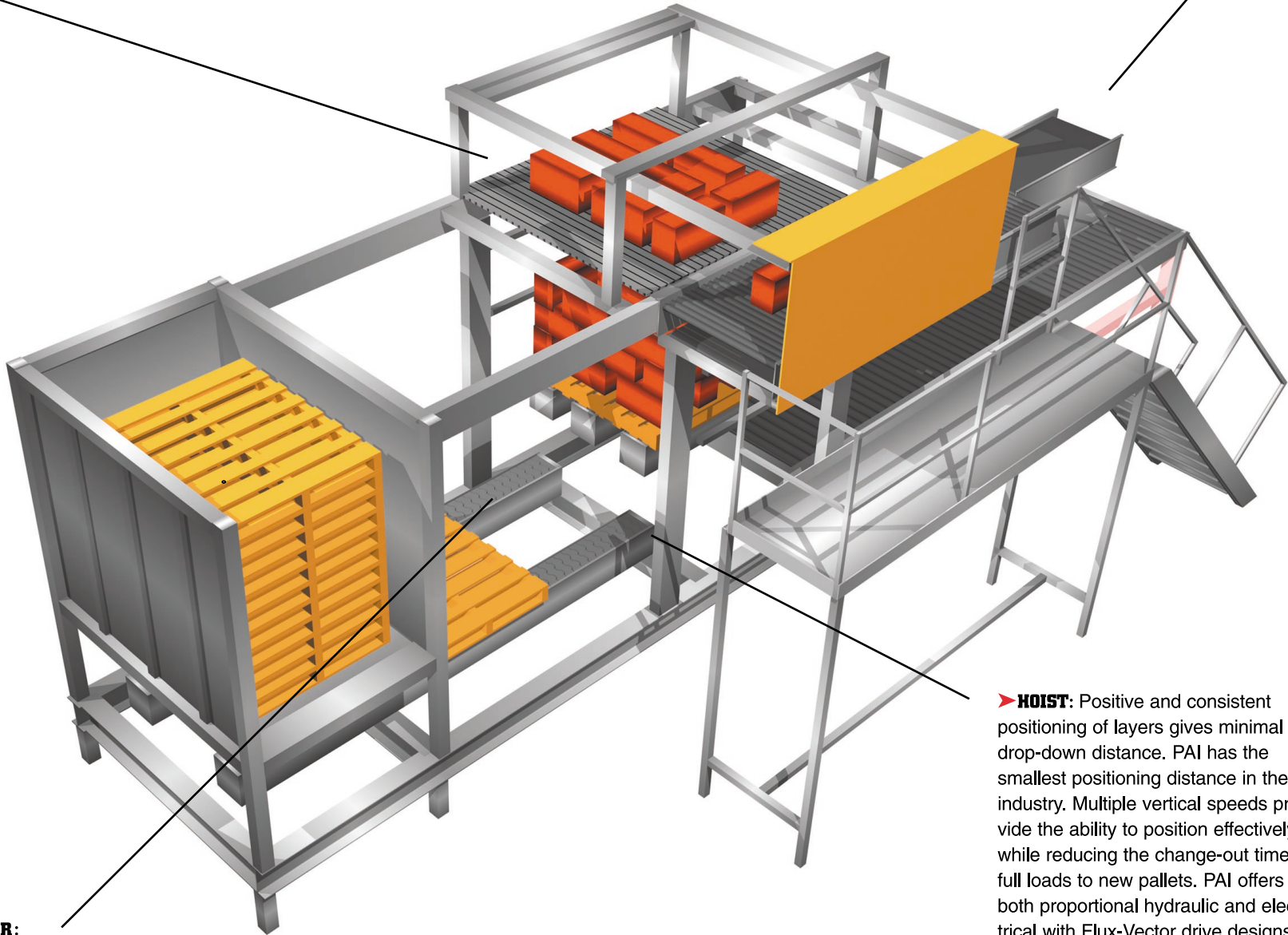


▶ **HOIST:** Positive and consistent positioning of layers gives minimal drop-down distance. PAI has the smallest positioning distance in the industry. Multiple vertical speeds provide the ability to position effectively while reducing the change-out time of full loads to new pallets. PAI offers both proportional hydraulic and electrical with Flux-Vector drive designs.

▶ **CASE TURNING:** Turners retract with each case and require no adjustment for varying case weights. PAI's soft turn provides protection for the cartons and true, consistent turns.

▶ **EMPTY PALLET CONVEYOR:**

Improved support of the empty pallet conveyor allows for simple, trouble-free handling of varying size and quality of pallets.



**The PAI is the most economical and versatile compact palletizer on the market today.  
Its small footprint allows for easy positioning in tight or awkward spaces.**

